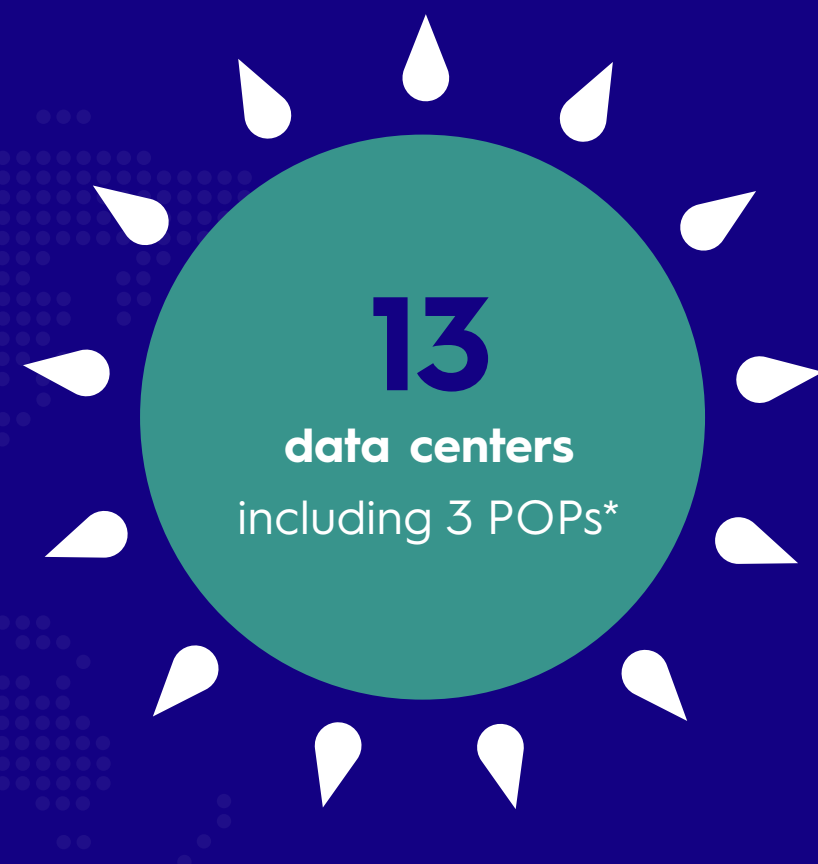


Environment at Criteo

Criteo's server infrastructure accounts for one of our largest environmental impacts.



Our **global**
infrastructure



*Criteo's operations rely on large data center units and several smaller networking rooms, also known as Points of Presence (POPs). Criteo installed its servers in 13 data centers worldwide, all of which belong to external service suppliers.

Enhance **sustainable practices among vendors** for hosting and hardware recycling, and hardware procurement.



SINCE 2016
Criteo asked for a guaranteed extension for the servers from three to five years.



2020
Criteo produced
65.5 tons of e-waste



BY 2021
Criteo intends to have
100% of its Data Centers energy compensated using renewable energy sources or certificates.

2020

Electricity consumption in Data Centers (DCs)

Total electricity consumption

68,511 MWh

Share of electricity from renewable energy sources

92%

Share of data-center consumption compared to total consumption (including offices)

95%

CO2 emissions generated by data centers
(post compensation efforts)

3,693 tCO₂

Environmental impact of Offices and Travel



Many of our offices were built according to high environmental quality norms.



Remote working has become the norm for all employees in 2020, due to Covid-19.

"In 2020, the low carbon emission from business trips is due to the travel freeze."



We sort and recycle waste and we have waste recycling bins, and battery recycling containers.



We are taking steps to **implement an approach to responsible purchasing for furniture, office supplies and events**, by including sustainable criteo in the choice provided.

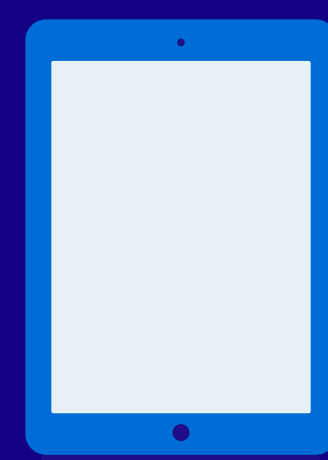
Others

2020

Criteo extended the work we were doing with Tree Nation by creating a "Criteo global forest".

1393
trees planted

219 t CO₂
captured



Promote a **paperless** work environment



CRITEO Cares
Green Community

The Green community (Criteo Cares ERG) aims to raise employees' awareness of environmental issues and to support Criteo's transformation towards a more responsible future.

More than

100
active members

10
green initiatives

Criteo signed the "Planet Tech Care" manifesto, partnering with other French technology companies and Syntec Numérique (SN helps companies leverage digital technologies to reduce their environmental footprint) to address environmental issues and support Criteo's transformation to a more responsible future.

†Regarding the calculation method of CO2 emissions, for data centers totally powered with renewable energy or for which compensation using renewable energy certificates is performed, the emission factor is considered to be zero. For other data centers the local factor is used.