

Our commitment

At Criteo, we care about the environment and have long been working to reduce the impact of our activities on the planet. Accelerating the formalization of our global long-term environmental strategy is one of our top priorities in 2022. This strategy will consider best practices and recommendations from leading initiatives such as Carbon Disclosure Project or the TCFD (Task force on climate disclosure).

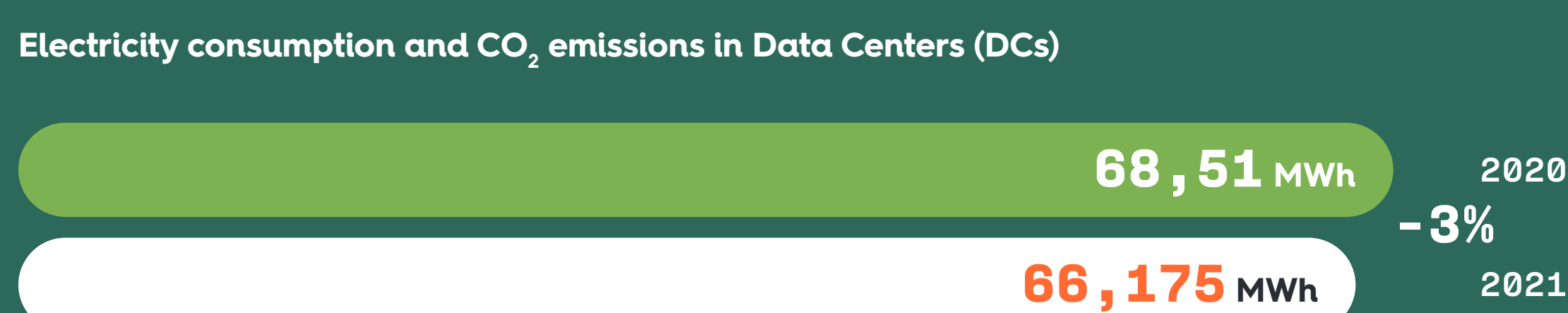
Until the sustainability strategy is more formally defined in 2022, Criteo continued its ongoing efforts to minimize the environmental footprint of the company in 2021. We are currently performing a complete Greenhouse gas assessment that will cover all emission scopes 1, 2 and 3. This will help us define a roadmap to set realistic Greenhouse gas emission and energy-reduction goals.



*Criteo's operations rely on large data center units and several smaller networking rooms, also known as Points of Presence (POPs). Criteo installed its servers in 13 data centers worldwide, all of which belong to external service suppliers.

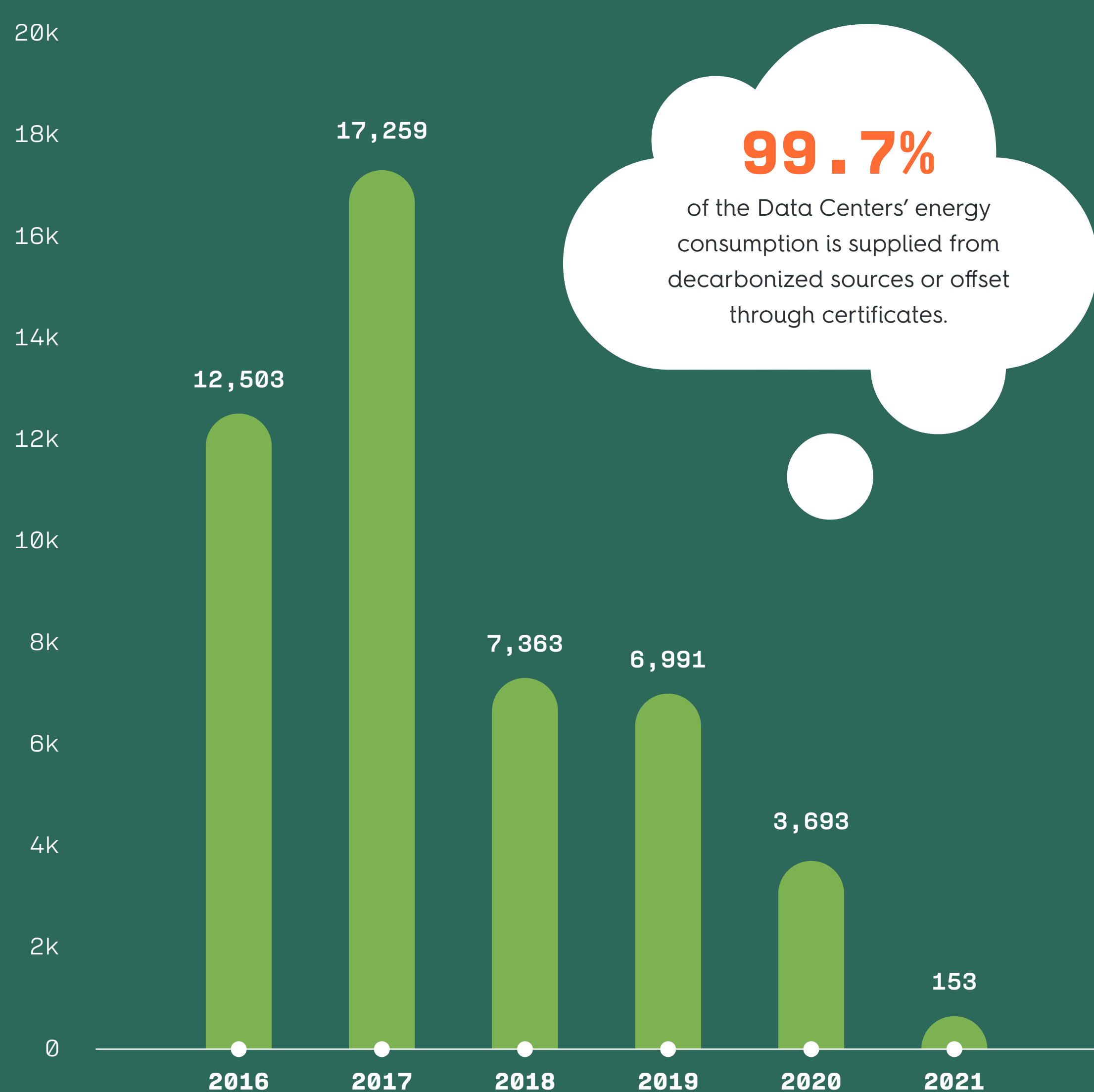


When it comes to electricity, Criteo's server infrastructure accounts for one of its largest environmental impacts.



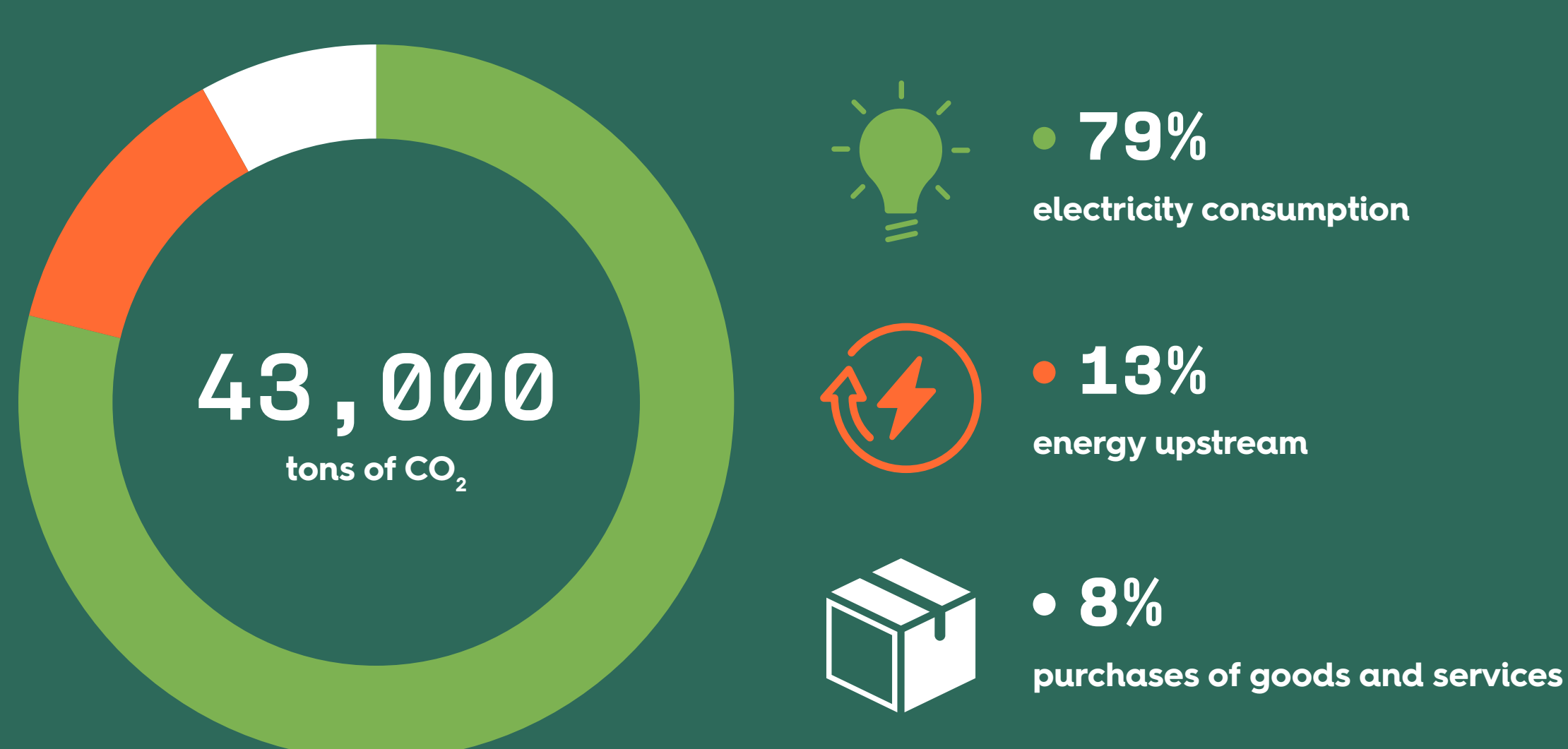
Data Center Electricity's CO₂ emissions

2016 to 2021 (TEQ CO₂) - after offsetting efforts

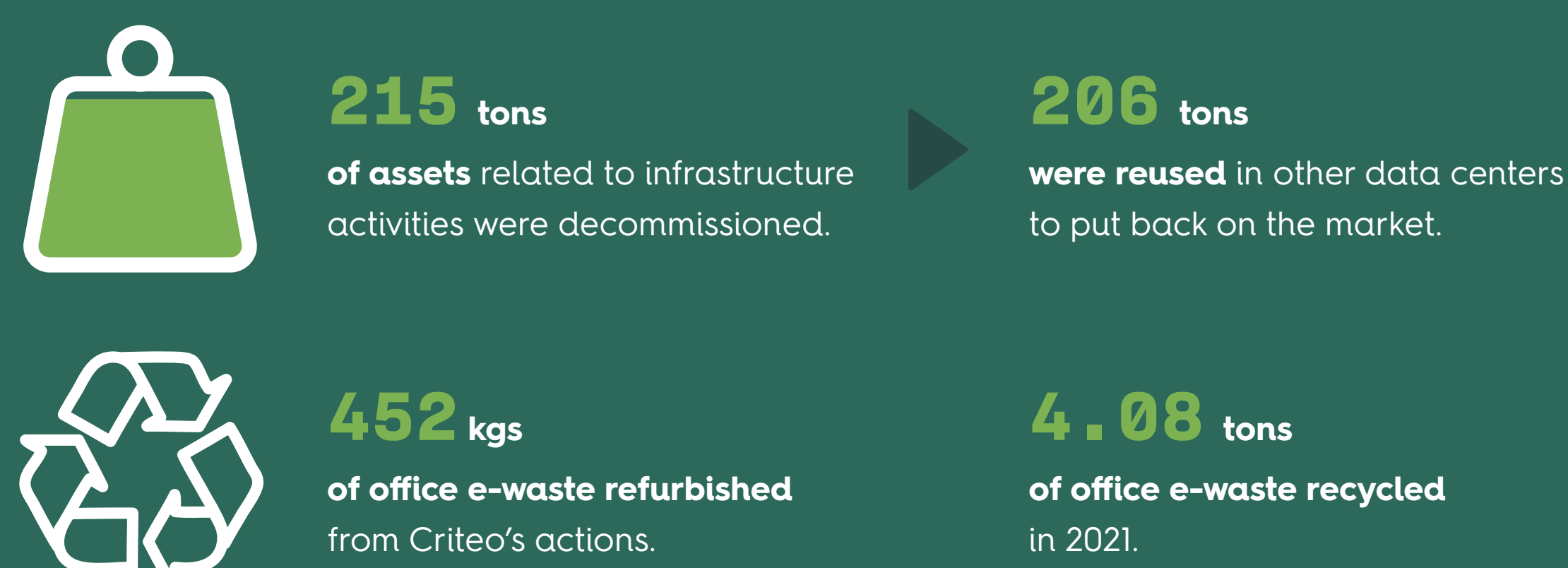


Total Infrastructure CO₂ emissions

(Scope 1, 2, 3) 2021 data



E-waste management



Environmental impact of Offices and Travel



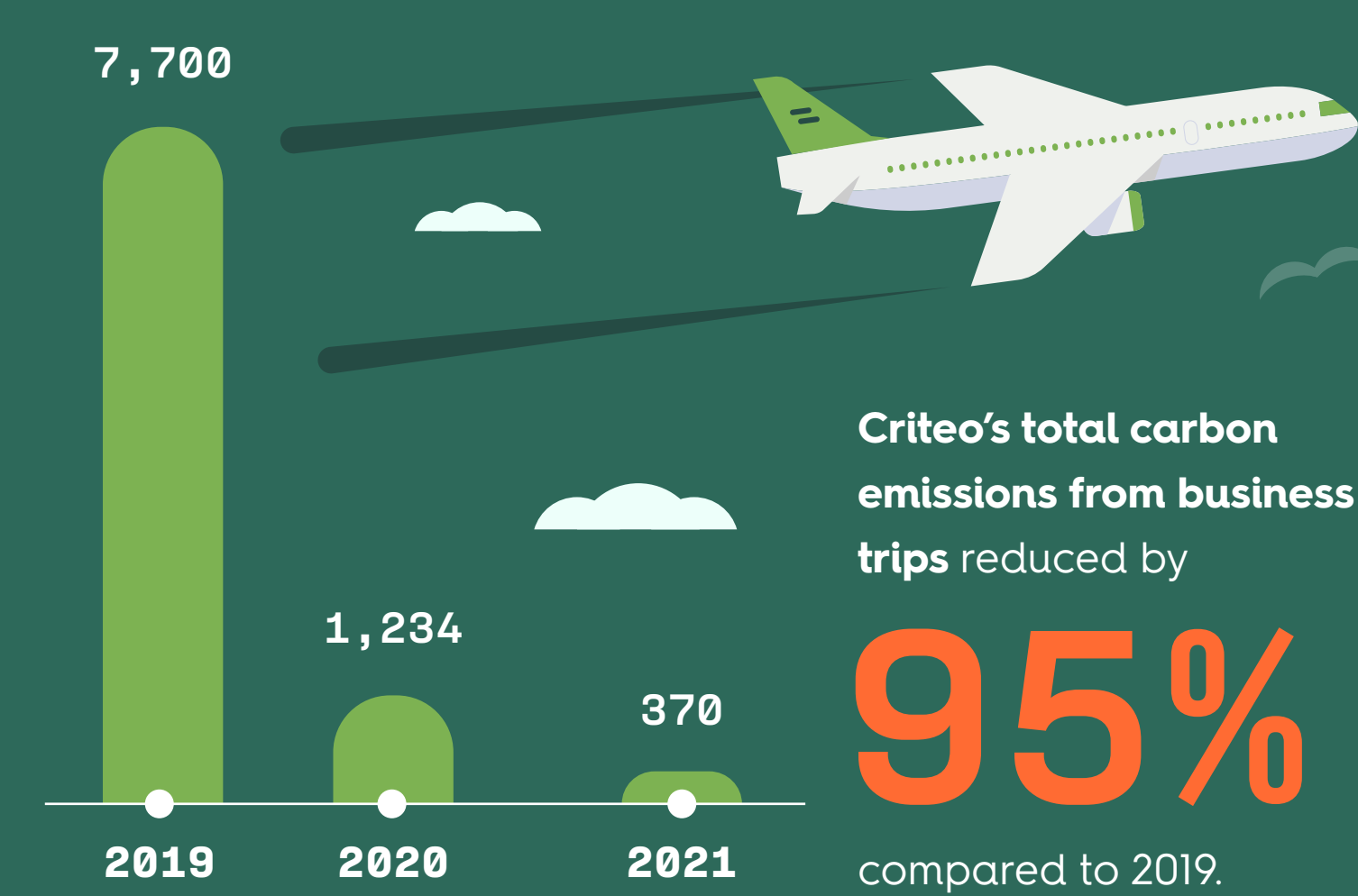
Electricity consumed in offices

	2020	Var.	2021
Total office electricity consumption	3,522 MWh	-36%	2,262 MWh
Total MWh per employee	1.34	-36%	0.86
From renewable energy sources	19.1%	7.5%	26.6%



GHG emissions due to offices and travel

	2020	Var.	2021
From electricity consumption	887 tCO ₂	-38%	554 tCO ₂
From business trips	1,234 tCO ₂	-70%	370 tCO ₂
Total carbon footprint per employee	0.8 tCO ₂	-56%	0.4 tCO ₂



200+ active members

1 global leader

4 regional leaders

2 annual celebrations
Earth Day & Environment Month

2 executive sponsors
CTO & CPO



Criteo plants trees in the Criteo Forest to congratulate Criteo employees active in Criteo Cares communities.

7,408 trees planted so far

